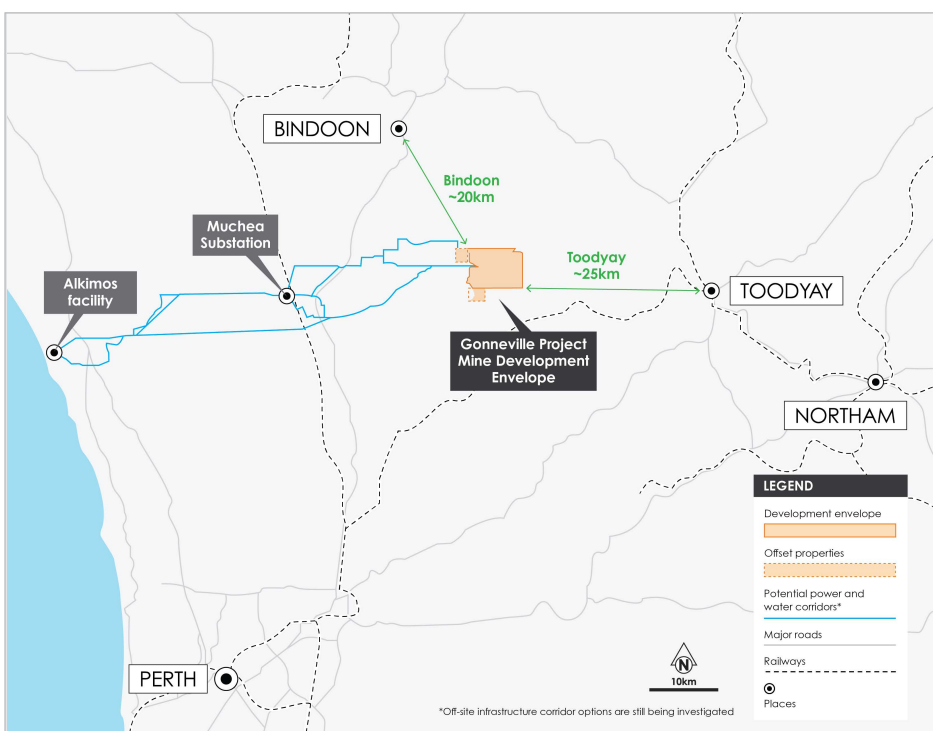




# The Gonneville Project

## What is the Gonneville Project?

- » The Gonneville Project is a critical minerals mine development, located on Chalice-owned farmland approximately 70 km north-east of Perth in the Wheatbelt region.
- » The Project hosts a deposit of palladium, platinum, nickel, copper and cobalt. These are critical minerals essential for technologies that will help address climate change.
- » The supply of these minerals is predicted to fall short of future demand, making projects like Gonneville strategically important.
- » Before a mine, processing plant and supporting infrastructure can be developed, the Gonneville Project must receive the approval of State and Commonwealth governments.
- » The Project is in the feasibility and permitting stage. Chalice has chosen to complete environmental approvals processes alongside ongoing engineering studies to ensure community feedback and environmental considerations can be incorporated early in the Project plans.
- » Proposed mining operations are expected to begin in 2029, with a projected mine life of 25+ years.
- » The Gonneville Project has the potential to deliver substantial benefits to the region through local job creation, local business opportunities and contribution to the economy.



## What are critical minerals?

- » The Gonneville Project hosts a rare mix of critical minerals – palladium, platinum, nickel, copper and cobalt.
- » These minerals are essential to modern life and are used in technologies such as:
  - » electric vehicles
  - » lithium-ion batteries
  - » electronics (phones, laptops etc.)
  - » energy storage
  - » green hydrogen
- » These minerals are required in large quantities to decarbonise the global economy, and significant shortages are predicted.

## What stage is the Gonneville Project at?

- » The Gonneville Project is not yet a mine.
- » Chalice has commenced a Pre-Feasibility Study (PFS), which will include more detailed investigations into how the Gonneville Project can be environmentally sound, economically viable and socially responsible.
- » Chalice has commenced government environmental approvals processes which are expected to take approximately 3 years to complete.
- » If Chalice is successful in gaining all required government approvals, it is estimated that construction would start in approximately 2027.
- » Construction of the mine would take ~2 years to complete before operations are expected to begin in 2029.

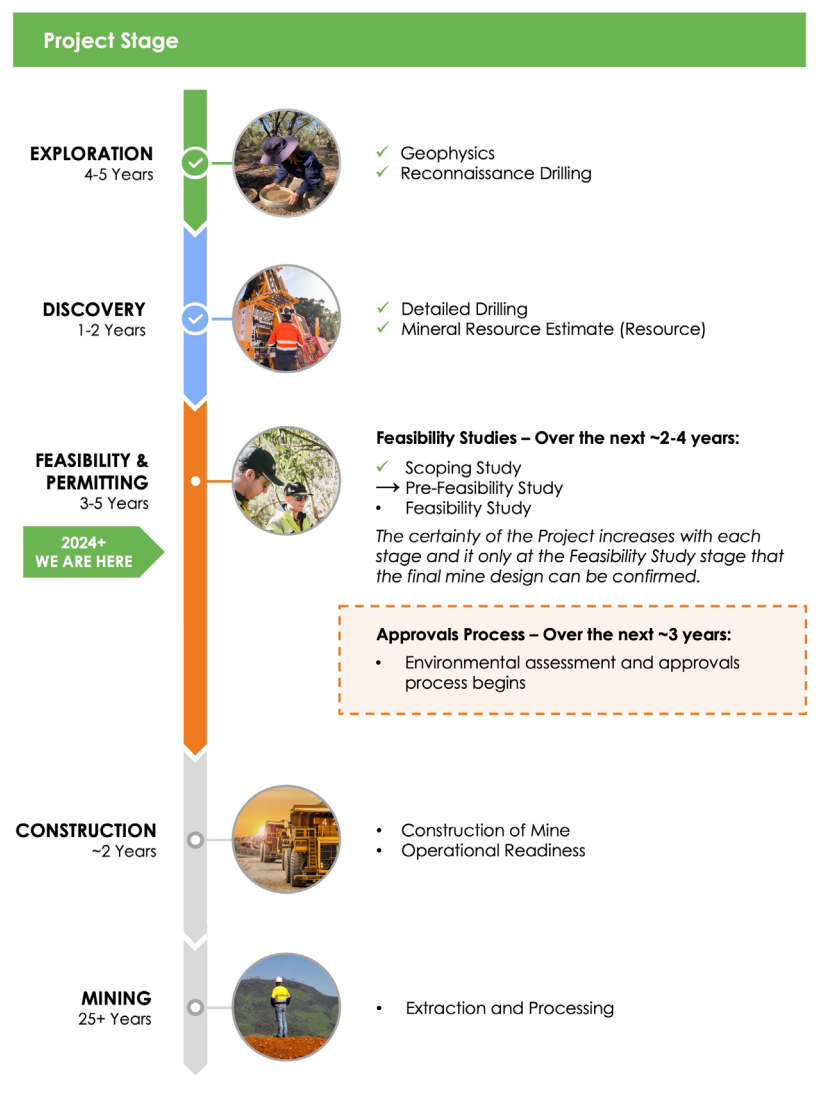
## Will there be an open mine pit in the future?

- » The Gonneville deposit starts at surface, and therefore an initial open pit mine is proposed on Chalice-owned farmland.
- » In later years, the Project may progress into an underground mine.
- » Open pit and underground mining options continue to be investigated.

## Is the Gonneville Project in the Julimar State Forest?

- » No. The Project does not include a mine in the Julimar State Forest.
- » The Gonneville Project is located on Chalice-owned farmland to the south. This land is already approximately 56% cleared from previous agricultural use.
- » The Project does not restrict community access to the State Forest.

## The Gonneville Project Timeline



## Development of the Project

- » The proposed Gonneville Project would involve construction of a mine, processing facility and supporting infrastructure, to allow the extraction and processing of critical minerals.
- » Products from the mine site would be transported to domestic or overseas customers for further refinement into metals.
- » Up to 15Mt of material will be processed annually, with a staged development – the mine is likely to start small and grow over time.
- » The proposed Project includes:
  - » Open pit and underground mining operations.
  - » Ore processing.
  - » Tailings storage facilities, stockpiles and waste rock landforms.
  - » Supporting infrastructure e.g. offices, workshops, water treatment plant, internal haul roads.
  - » Temporary facilities during construction e.g. accommodation and water supply.
- » This infrastructure will be contained within a 2,240ha (~22.4km<sup>2</sup>) development area on farmland owned by Chalice. This land is already approximately 56% cleared from previous agricultural use.
- » The Project also includes off-site infrastructure corridor options for water pipelines and power lines. Multiple corridor options are being considered and investigated in consultation with Water Corporation and Western Power.



### Water

A water pipeline will be required to supply water to the site from the Alkimos facility.



### Power

A new powerline is proposed to connect the mine site to the existing South West Interconnected System (SWIS) at the Muchea substation.



### Transport

Transportation corridors are still in design phase with road and/or existing rail infrastructure options being considered.

## Will a mine use local water supply?

- » There is no existing piped water infrastructure at the Gonneville Project, so water will need to be brought in to supply the mine.
- » Water supply options during construction are still being investigated further and may include temporary local sources and/or third-party suppliers.
- » Chalice has commenced discussions with the Water Corporation to investigate water supply options from Alkimos facility.
- » Chalice recognises that water is a critical shared resource that must be managed efficiently and responsibly.

## What power supply will a mine use?

- » Current power supply to the Project site does not meet expected requirements for construction or mine operations.
- » Chalice has commenced discussions with Western Power to investigate power options.
- » Infrastructure developed to supply power to site may support additional power options in the local region.

## Find out more about the Project

To read more about the Project, visit the new Gonneville Project website:



[www.gonnevilleproject.com.au](http://www.gonnevilleproject.com.au)  
or scan the QR code with your phone camera

To receive monthly Project Updates and quarterly Community Newsletters, sign up to the Chalice community mailing list at



[www.gonnevilleproject.com.au/  
community-newsletter](http://www.gonnevilleproject.com.au/community-newsletter) or scan the QR code with your phone camera



## Community

### Will there be opportunities to provide feedback?

- » Yes. Chalice recognises that community consultation will play a key role in all our planning.
- » To help Chalice better understand community sentiment, we have commenced our Local Voices Survey.
- » Local Voices is independent and confidential, and will involve a number of surveys over the next 3 years to inform our decision making.
- » Our community consultation will increase as the Project advances, and will play a key role in government environmental approvals processes.

### Have Traditional Owners been consulted?

- » Yes. Chalice has been engaging with Whadjuk Traditional Owners since 2021.
- » The Gonneville Project is located in the Whadjuk Indigenous Land Use Agreement Area.
- » Cultural Heritage surveys have been conducted by Whadjuk across the entire Project area. Whadjuk have also participated in environmental surveys.
- » Since 2021, over 70 Traditional Owners have been involved in cultural heritage monitoring and surveys across the region.

### Will there be employment opportunities?

- » Chalice will prioritise local jobs for both construction and operations phases. Construction is expected to start in approximately 2027.

### Benefits of the Gonneville Project

The Gonneville Project has the potential to deliver substantial benefits to the region by creating local jobs and supporting local businesses. Economic studies<sup>1</sup> have forecast that Gonneville has the potential to deliver:

**~1200** peak jobs during construction      **~500** jobs during operation

A contribution of up to

**~\$18 billion** to the WA economy over 18+ years of operations – with potential for extension beyond the initial modelled life

### How does Chalice support local communities?

Chalice and our contractors have contributed

**\$8.2 million** to local communities surrounding Gonneville since the discovery (FY21-23)

Chalice provided

**\$230,000** of funding across **more than 40**

community groups and projects in the areas surrounding Gonneville

Chalice will continue to fund opportunities through our **Community Investment Program** and once in operation, through the **Chalice Mining Community Fund** with the Shire of Toodyay.

## Get in Touch

If you would like to provide feedback, ask questions or speak to the team, there are various ways to do so:

**Email:**  
community@chalicemining.com

**Phone:** Call the Chalice community team from 9am – 4pm weekdays on 0487 371 961

**In person:**  
Chalice Toodyay Office

5 Charcoal Lane Toodyay  
Thursday mornings from 8.30 – 11.30am



Scan the QR code to visit the Gonneville Project website